

track and trace

**ecodriving**

freight & fleet management

navigation and LBS

eCall & bCall

road charging

**infotainment**

pay-as-you-drive insurance/leasing

# **DATEX as a deployment enabler**

## **the case of parking in Belgium**



**20.05.2014**

enforcement

**mobile mapping**

public transport management

payment systems

mobility information

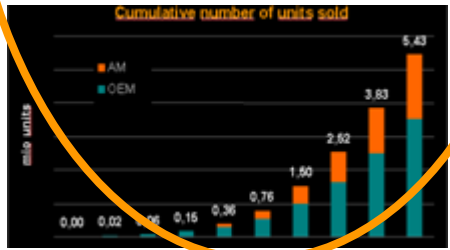
variable message signs

traffic sign database

incident detection



# ITS = Traffic Technology + Mobile Solutions



# Public-private cooperation



- LED/VMS = dashboard/smartphone
- Public & private policies in sync
- New form of PPP
  
- Open data essential
  - Legally required
  - Good for business

# ITS Directive (2010/40/EG) - 6 priority actions



1. EU-wide multimodal travel information services
2. EU-wide real-time traffic information services
3. Minimum universal safety-related traffic information free of charge to users
4. Interoperable EU-wide eCall
5. Information &
6. Reservation services for secure parking for trucks

# Essence (see Annex directive)



1. EU-wide multimodal travel information services:
  1. **availability and accessibility of real-time travel data** by authorities to private service providers
  2. on **electronical basis**
  3. timely updating by authorities
  4. timely updating by private service providers
  5. based on European specifications
2. EU-wide real-time traffic information services
  1. **availability and accessibility of real-time traffic data** by authorities to private service providers
  2. on **electronical basis**
  3. timely updating by authorities
  4. timely updating by private service providers
  5. based on European specifications

# ITS.be working groups



- Parking
- (Secure) Truck Parking
- Public transport information
- Traffic information
- *eCall*
- *Road charging*



# Open data standards

1. Which data
2. Format
3. *Open data portal & search function*
4. *Applications generating content*
5. *Applications consuming content*
6. Licence models
7. Quality



# From offering content



ITS ParkingApp 2.8 (C:\1. ITS B 20111005\2. Activites\Working groups\Parking\Sven\20130204 - latest\20120208 Published data\ParkingData%20(2)%20-%20Gent\_20121...

Bestand Taal Help

Overheden

Mobiliteitsbedrijf Stad Gent

Operatoren

Parking

Straat parkeren

Toegangen

Parkeergeleiding

Parkeergeleidingsboodschap

Abonnementen

Tarieven

Kalender

Parkeerroutes

P1 Vrijdagmarkt - primaire invalsw...

Details Overzicht Portaal

Map Satellite

Map data ©2013 Google - Terms of Use Report a map error

Overhede  Operatore  Parking  Parkeerroutes

Straat  Toegange  Parkeergeleidin

Selecteer Selecteer Vernieuw



### Parking details Antwerp

Followers  
4

Organization



Dataset Activity Stream Related

## Parking details Antwerp

These are the parking details taken from the ITS Broker portal

### Data and Resources

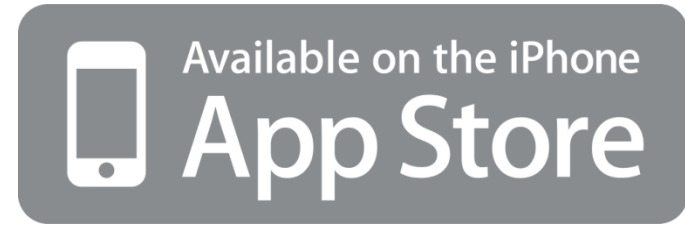
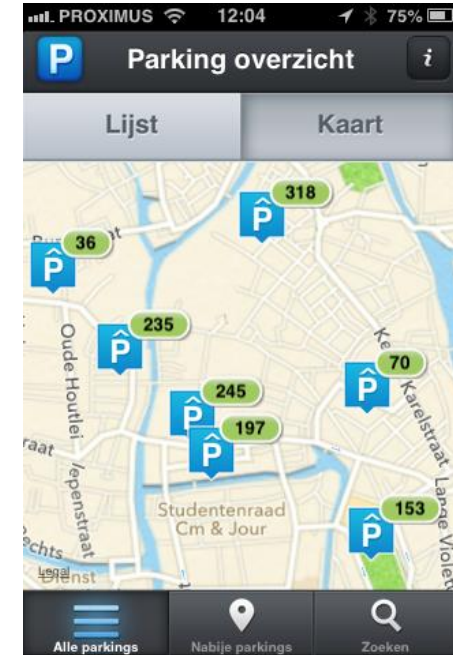
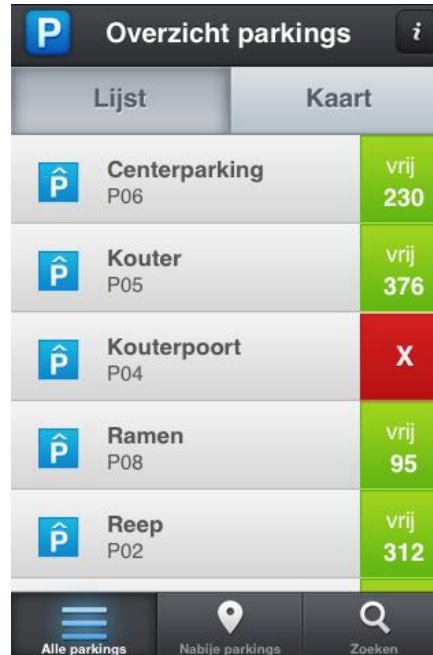
parkingdata-antwerpen-20131107-itsps.xml  
No description for this resource

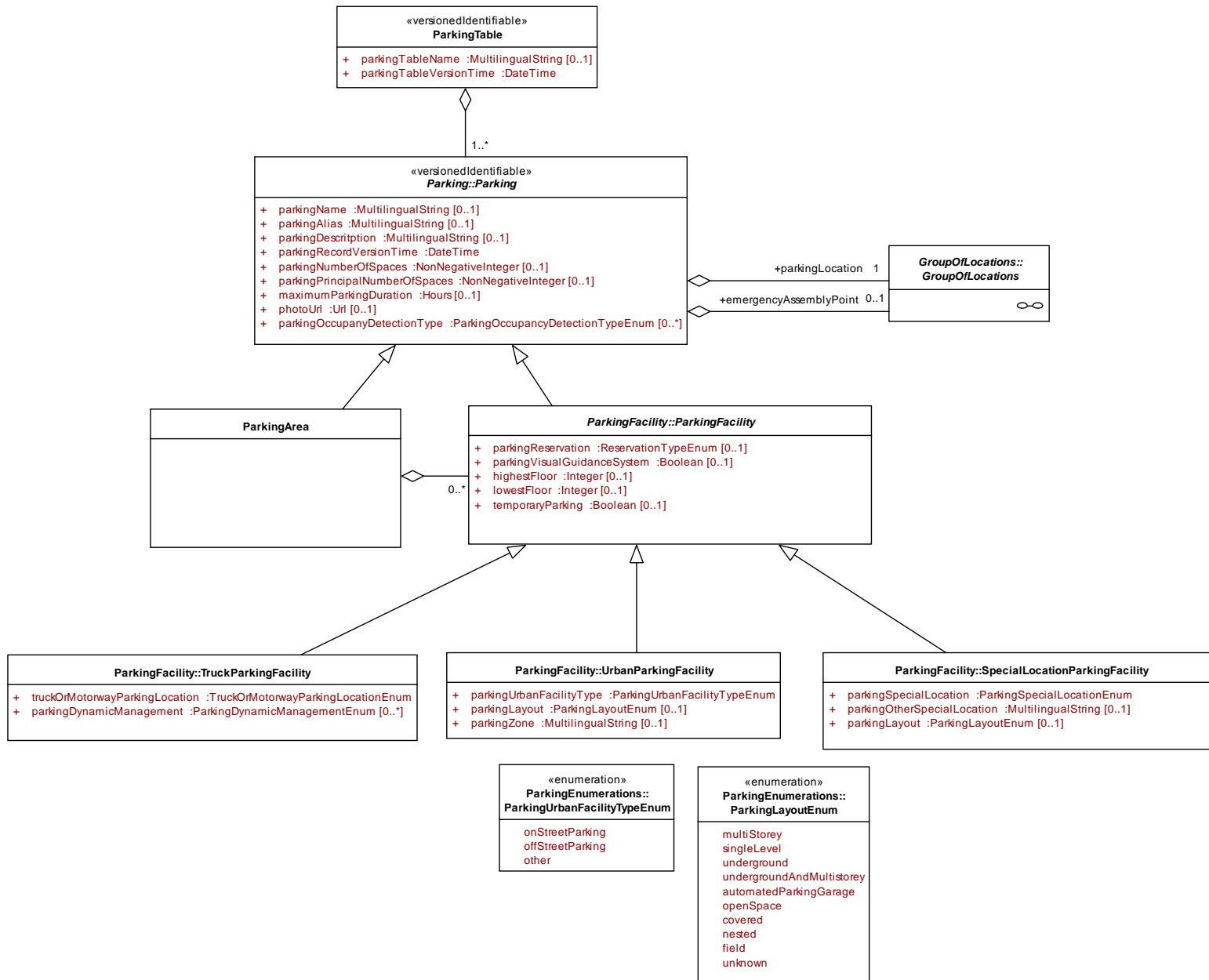
Explore

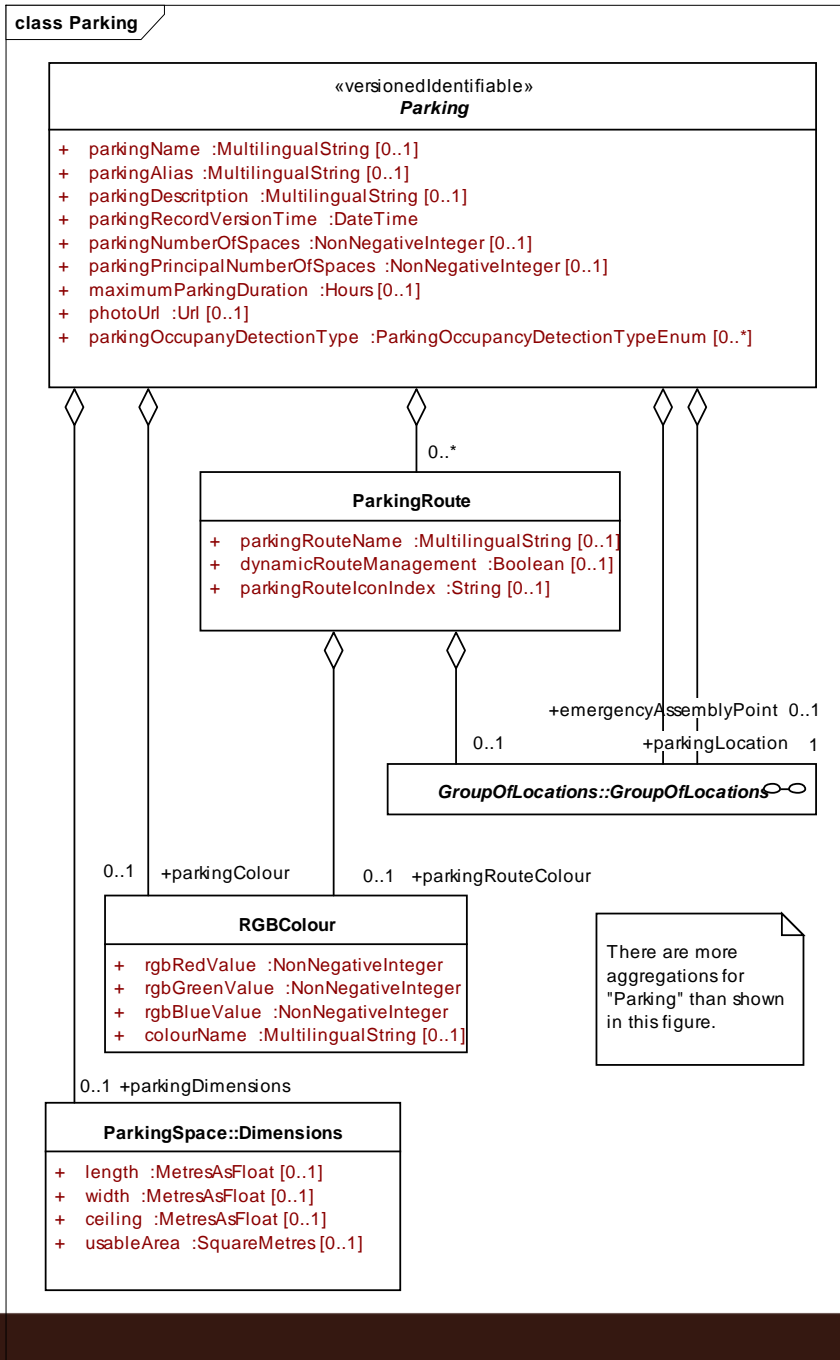
Antwerp Antwerpen parking

### Additional Info

# To mobile app







# Conclusions



- Open data allows to (roughly) double the value of monitoring investments
- ITS directive & standardisation (European legislation & standards)
- All concerns must be addressed - open dialogue between public & private sector necessary