



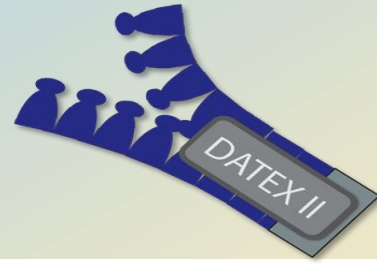
# CROSS-BORDER DATA EXCHANGE BECOMING REALITY IN THE TRIANGLE AUSTRIA-SLOVENIA-ITALY



Martin Böhm, Austria

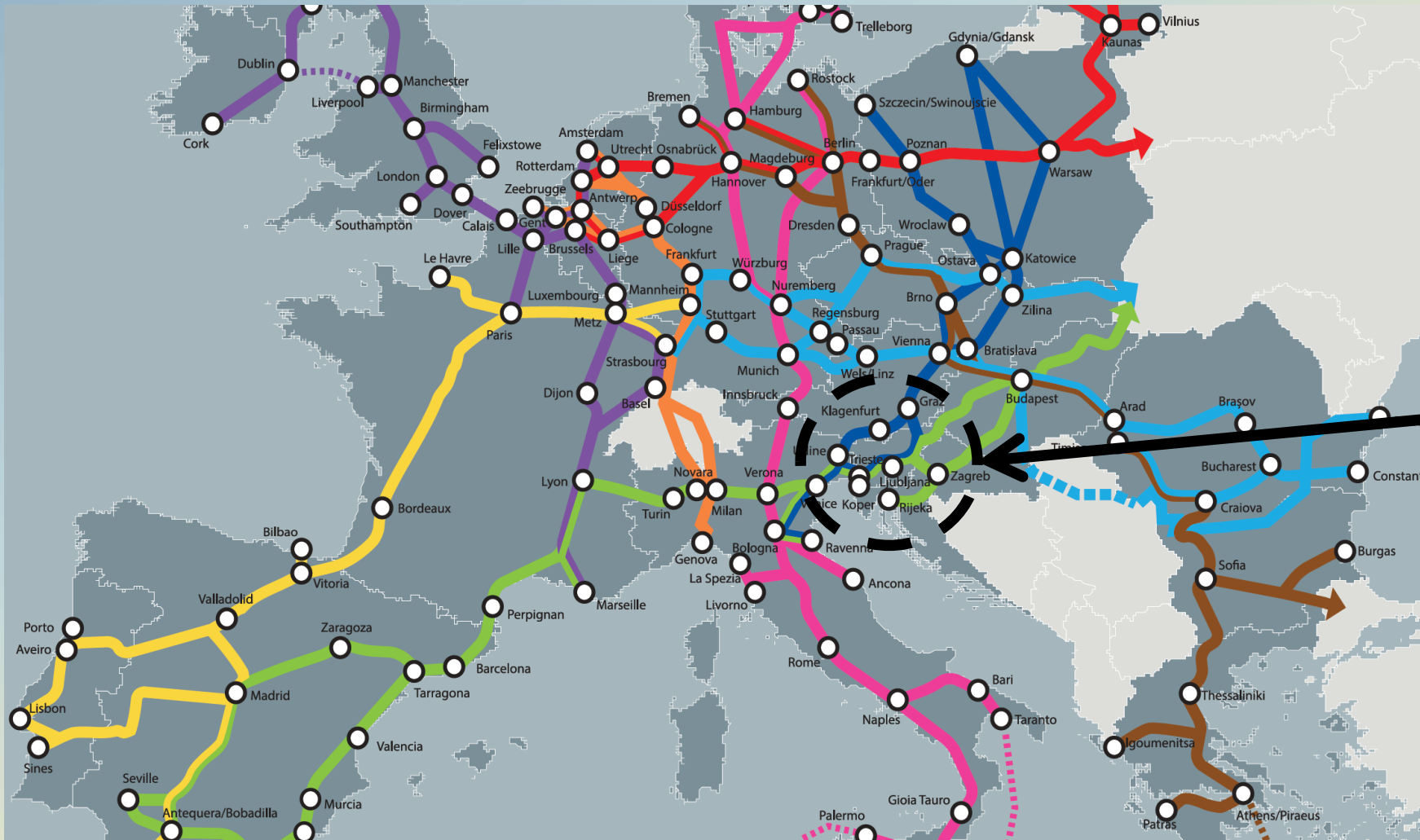
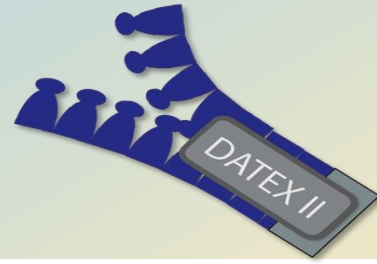
***austriatech***

# Agenda



- The need
- The history
- Current situation
- The pilot – solutions to be tested
  - ▣ Geo Referencing
  - ▣ DATEX II data exchange
  - ▣ End user services
- Next steps towards sustainable deployment

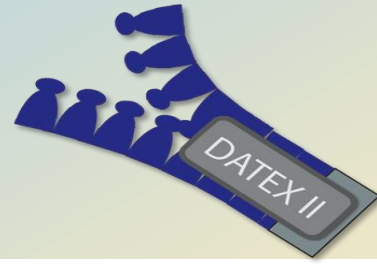
# The need



- BALTIC - ADRIATIC
- NORTH SEA - BALTIC
- MEDITERRANEAN

Source: <http://ec.europa.eu/transport/themes/infrastructure/doc/ten-t-country-fiches/ten-t-corridor-map-2013.pdf>

# The need



Blizzard, 3<sup>rd</sup> Feb. 2014  
(source: www.bbc.co.uk)

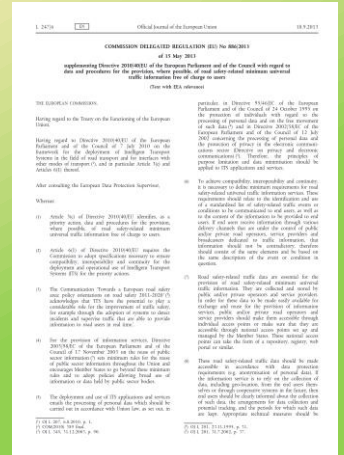
Snowstorm, 15<sup>th</sup> Mar. 2013  
(source: rt.com)



Tourists, every summer  
(source: www.salzburg24.at)



## ITS Directive



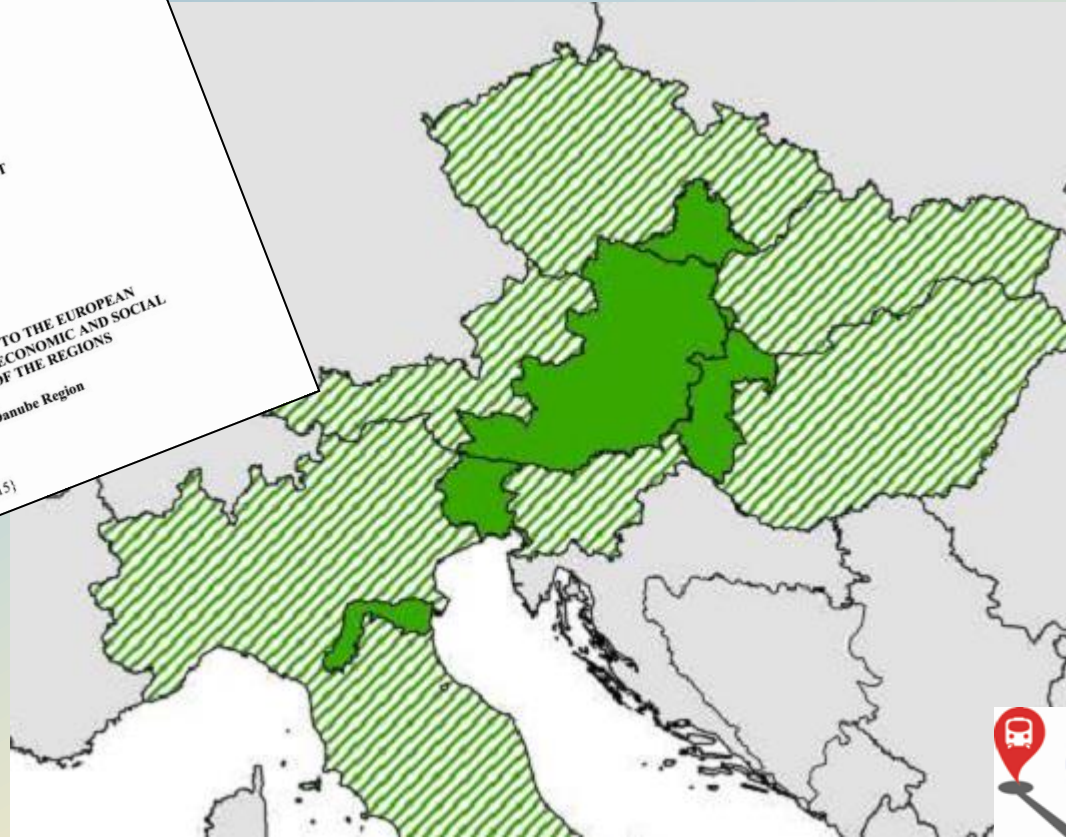
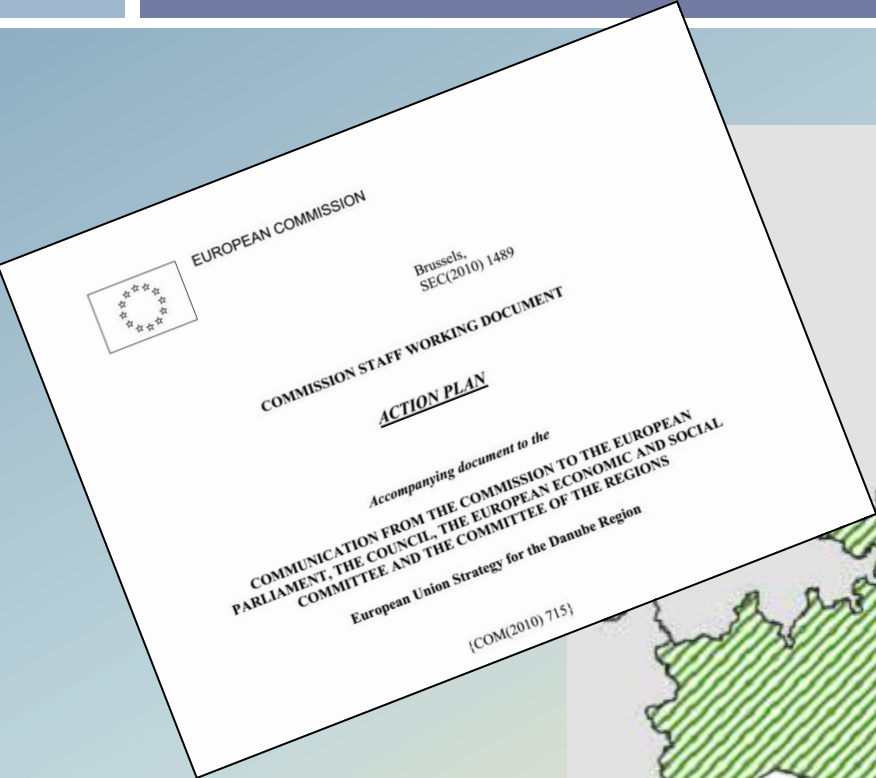
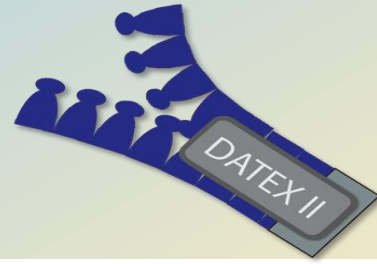
# The history



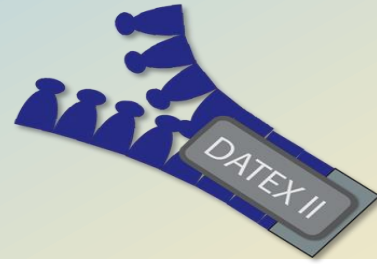
To elaborate and implement procedures and means of communication for a mutual electronic exchange of national traffic information between their Traffic Information/Management Centres,

5<sup>th</sup> Aug. 2009

# The history



# Current situation



**VAO**

**IDOS**  
Jízdní řády

**BRATISLAVA**

**KIRA**  
KÖZLEKEDÉSI INFORMÁCIÓS RENDSZER ÉS ADATBÁZIS

**Transport Infrastructure Monitoring**  
**TRIM**

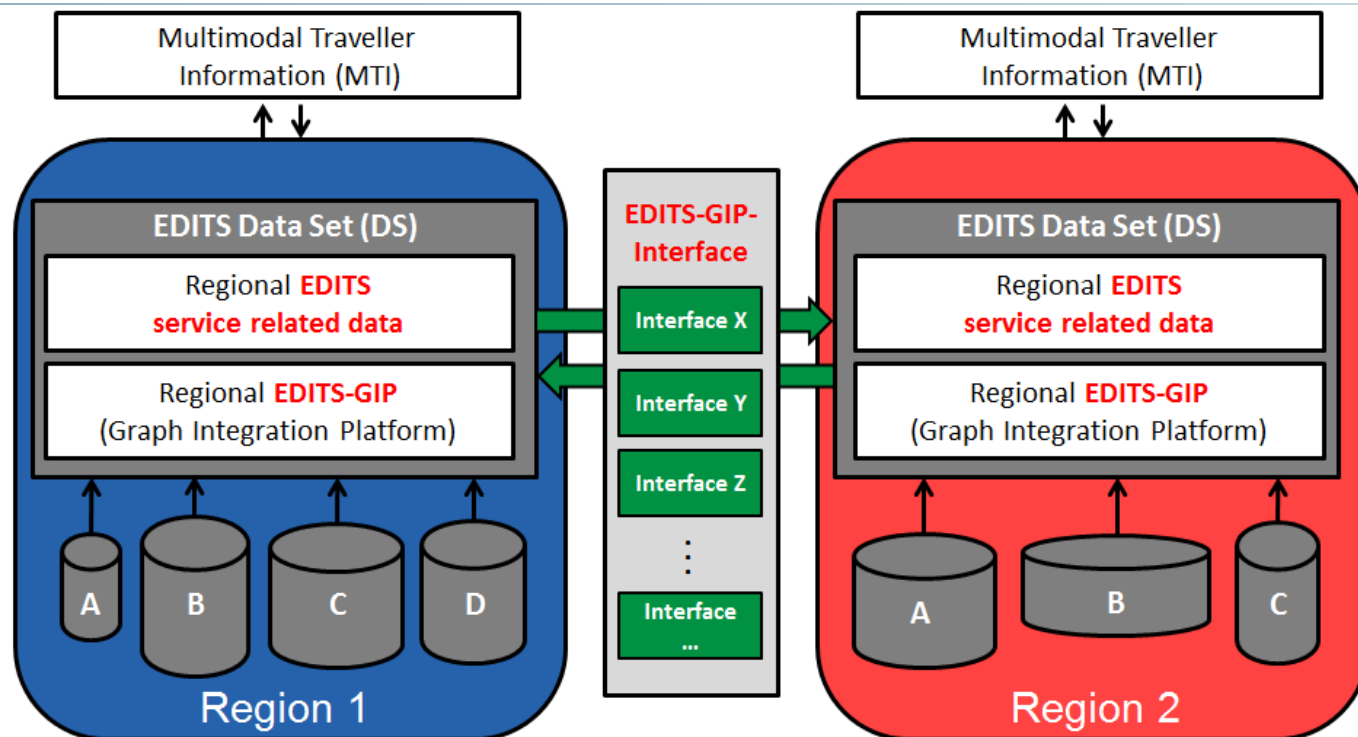
**PIC**  
PRŮMĚTNĚ-INFORMAČNÍ CENTRUM ZA DRÁŽAVÉ CESTE  
info@promet.sk 1970

# The pilot – overview

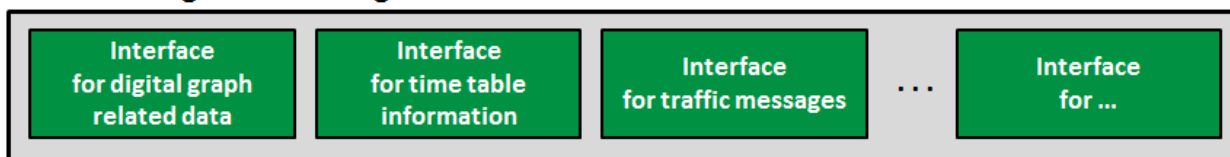




# The pilot – overview



Example of **EDITS-GIP-Interface** for commonly agreed data and information exchange between Region 1 and Region 2:



## Data to be exchanged:

- Webcam Information
- Static Rest Area Information
- Weather Warnings
- Level of Service Information including Road closures and Traffic jams / long queues

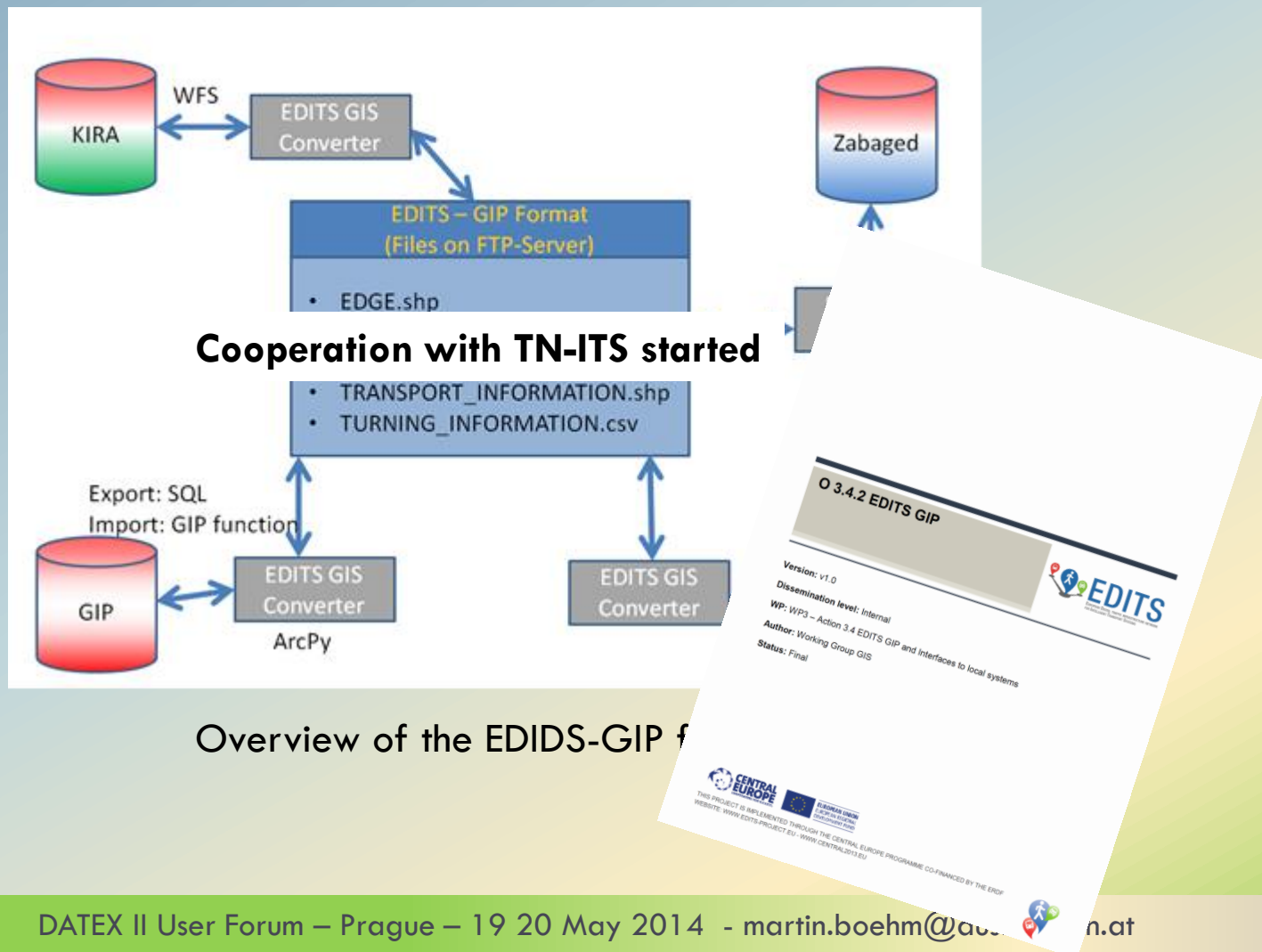
## Based on

- EW-DG-2012\_TIS-DG02\_Forecast And Real Time Event Info
- EW-DG-2012\_TIS-DG03\_05\_Travel Condition And Travel Time Information
- EW-DG-2012\_TIS-DG06\_Weather Information

## Implementing bodies

- DARS
- AutoVie Venete
- ASFINAG

# The pilot – Geo Referencing



## Solution within the triangle:

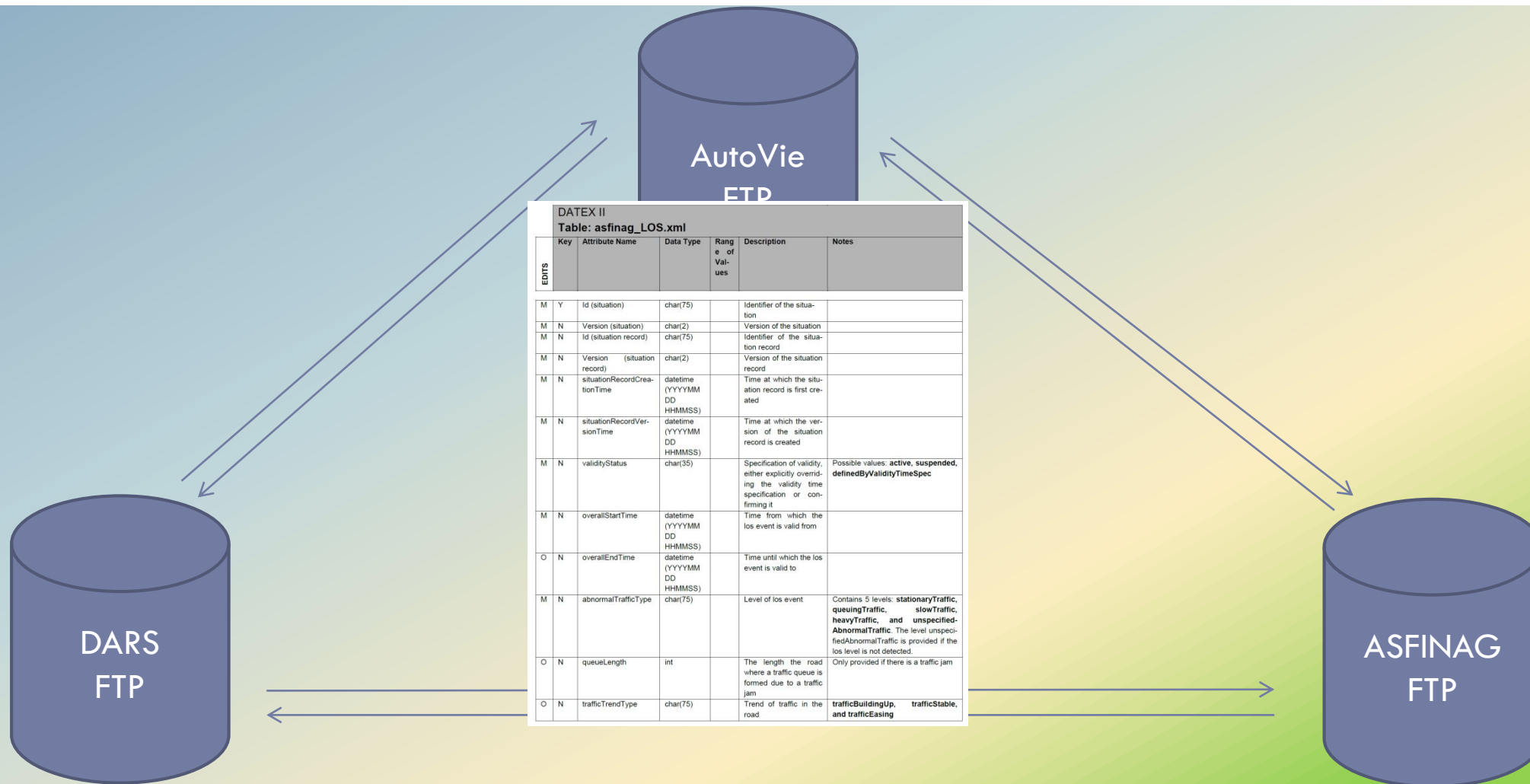
- DARS: Promet Graph**
- ASFINAG: GIP Graph**
- AutoVie Venete: commercial Graph**
- ➔ **Harmonisation is topic of the future**

## As focus is currently on motorway network:

- Geo-referencing based on TMC-location codes**
- x/y coordinates**
- Additional information (e.g. road name, direction)**

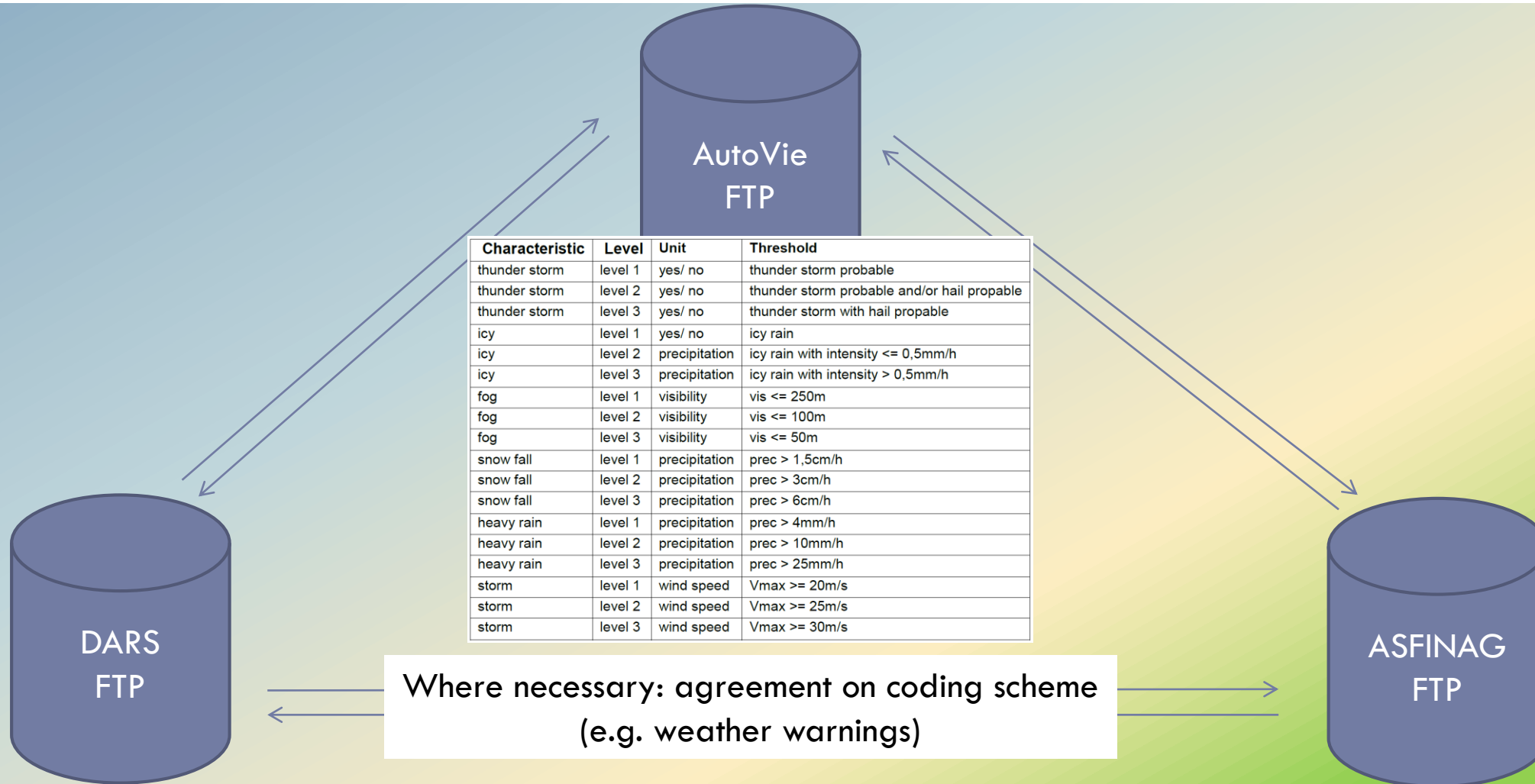


# The pilot – DATEX II data exchange





# The pilot – DATEX II data exchange






# The pilot – End user services

Information content will be implemented in existing services:

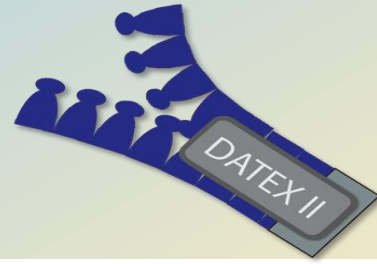
- ❑ <http://promet.si>
- ❑ <http://www.autovie.it/>
- ❑ <http://www.asfinag.at/>

Including

- ❑ Website information
- ❑ Roadside information
- ❑ Mobile app information

Transport Mode Categories	EDITS Modules
<b>1. Individual Transport</b> 	1.1 Static Road Information 1.2 Dynamic Road Information 1.3 Static Parking Information 1.4 Dynamic Parking Information 1.5 Walking Information 1.6 Cycling Information
<b>2. Public Transport</b> 	2.1 Static Public Transport Information 2.2 Dynamic Public Transport Information
<b>3. Intermodal Transport</b> 	3.1 Intermodal Transport Information

# The pilot – End user services



www.asfinag.at/asf.routenplaner/routenplaner

English | Deutsch | Feedback | Über Verkehrsauskunft Österreich | Impressum | Nutzungsbedingungen

## ASFINAG

UNTERWEGS MAUT ÜBER UNS

FAHRT ERGEBNIS >> DETAILS

START 1020 Wien - Leopoldstadt, Raimundgasse  
ZIEL Mirabellplatz, Salzburg  
ABFAHRT Do, 17.04.2014, 14:39

**Auto**

17.04.2014  
14:39

PKW | 316,8 km | 3h 22min  
ab 14:39 1020 Wien - Leopoldst...  
an 18:01 Mirabellplatz, Salzburg

**A1**  
West Autobahn: Wien - Linz  
Zwischen Autobahnknoten St. Pölten  
und AS St. Pölten-Süd in beiden  
Richtungen ein Fahrstreifen gesperrt,  
Baustelle bis 30.05.2014

17.03.2014 15:42  
30.05.2014 00:00  
Quelle: ASFINAG

**A1**  
West Autobahn: Salzburg - Linz  
Zwischen AS Salzburg-Nord und AS  
Wallersee in beiden Richtungen  
Baustelle, Arbeiten am  
Pannestreifen bis 25.04.2014 17:00  
Uhr Sperre des Pannestreifen bzw.  
Beschleunigungsstreifen -  
Arbeitsabhängig.

10.04.2014 11:30  
25.04.2014 17:00  
Quelle: ASFINAG

Mirabellplatz, Salzburg  
an 18:01

ANSICHT

# The pilot – next steps



## Timeplan:

- Setup of Data exchange until End of June 2014
- Test of Data exchange with real data during summer period
- Integration of data and information into existing services by September 2014
- Pilot operation in autumn
- Extension to Crocodile Corridor from late 2014 on.

# The pilot – next steps



Thank you for your attention!

Martin Böhm  
AustriaTech GmbH

p: +43.1.2633444.63

m: +43.676.6140014

e: [martin.boehm@austriatech.at](mailto:martin.boehm@austriatech.at)