



THE FUTURE OF DATEX II

DATEX II AND THE ITS DEPLOYMENT GUIDELINES

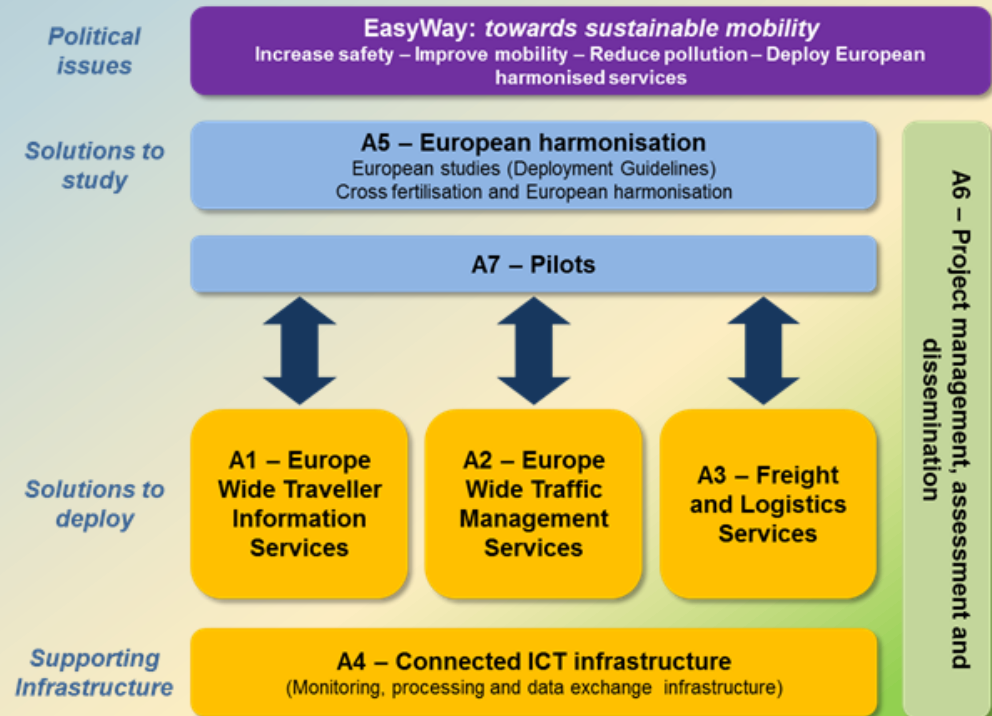
HANFRIED ALBRECHT, EIP ACTIVITY 2



DATEX II USER FORUM 2014, PRAGUE

The roots: the EasyWay project

- was a cooperation project of road authorities and road operators from 27 European countries
- intended to unlock the benefits of cooperation and harmonisation in the deployment of Intelligent Transport Systems (ITS) on Europe's major road network
- was no standardisation body
- did not have any power to legally constrain the Member States in their national deployment activities



Overview of EasyWay Activities



ITS Deployment Guidelines ...

3

- were developed as one of the major achievements of the EasyWay project (to versions: 2010 and 2012)
- are neither technical standards nor specifications (as currently developed by the European Commission as their part of the implementation of the ITS Directive 2010/40/EU)
- intend to be user supporting guidelines to foster harmonisation and interoperability of ITS-services in Europe, written in a way that clearly defines criteria that deployments have to fulfil in order to claim overall compliance with the guideline

ITS Deployment Guidelines

What is the goal?



4

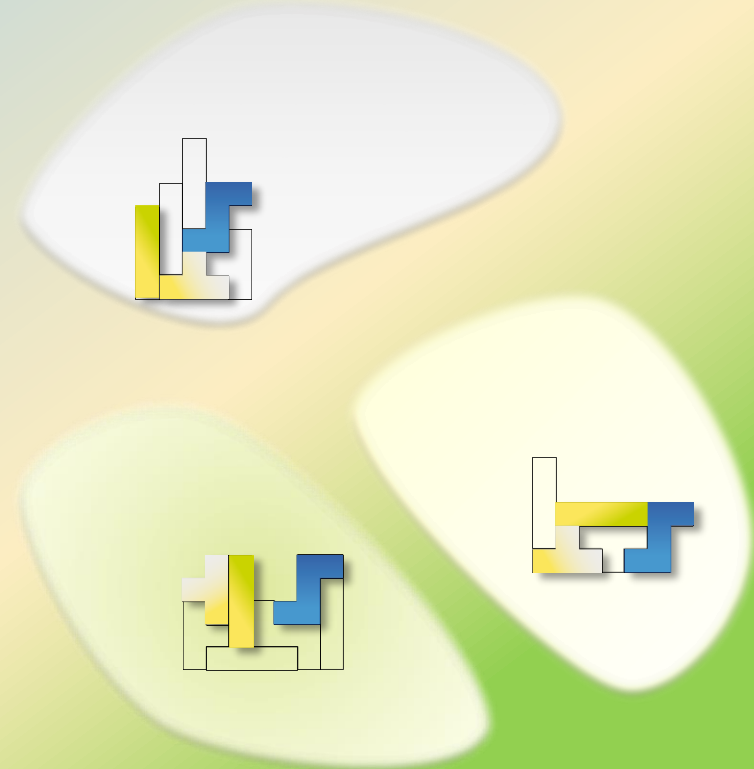
Harmonisation leads to a European added value

DG2012

local ITS-Service instances



Use



ITS Deployment Guidelines

The development process



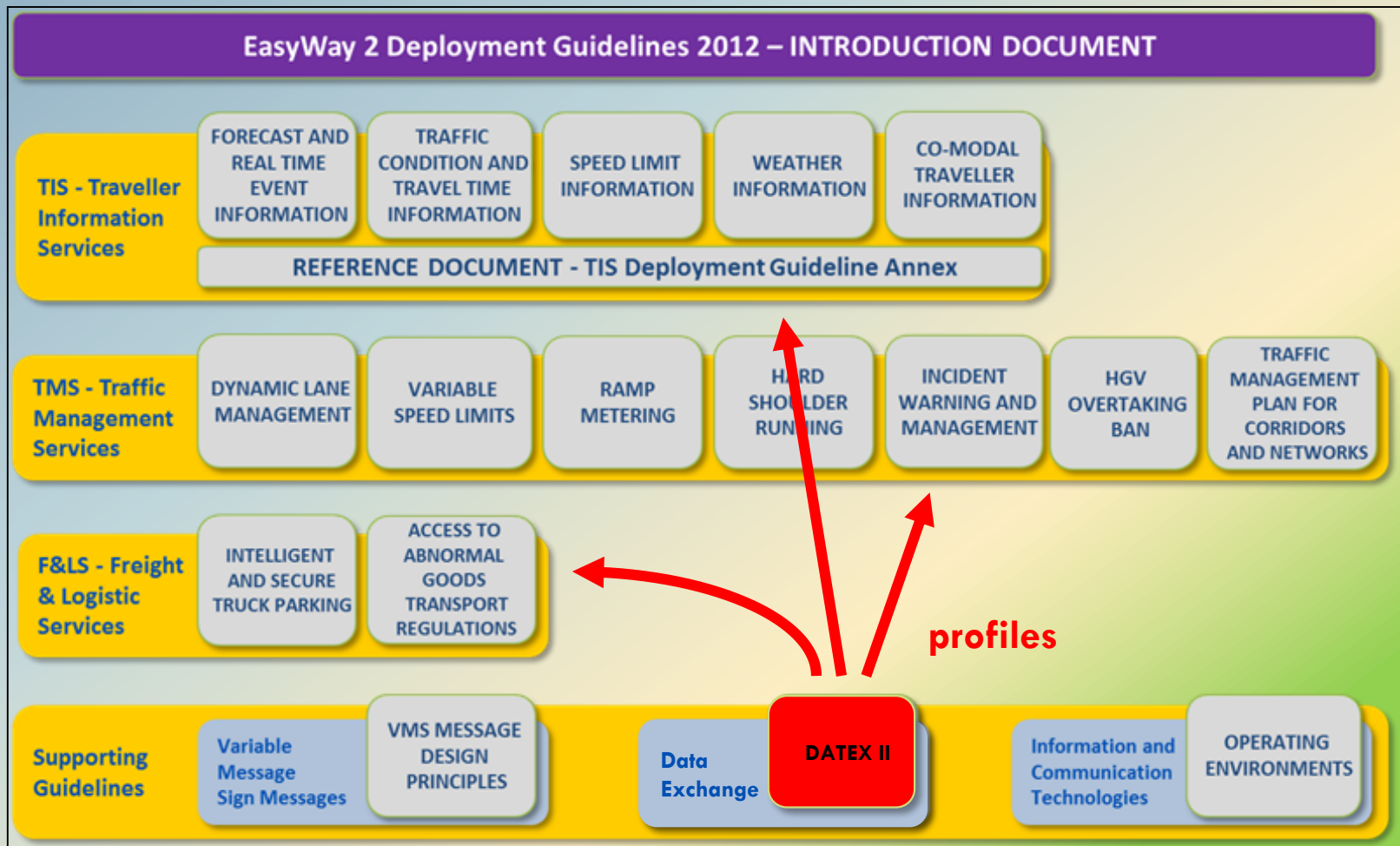
5



ITS Deployment Guidelines Document set structure



6

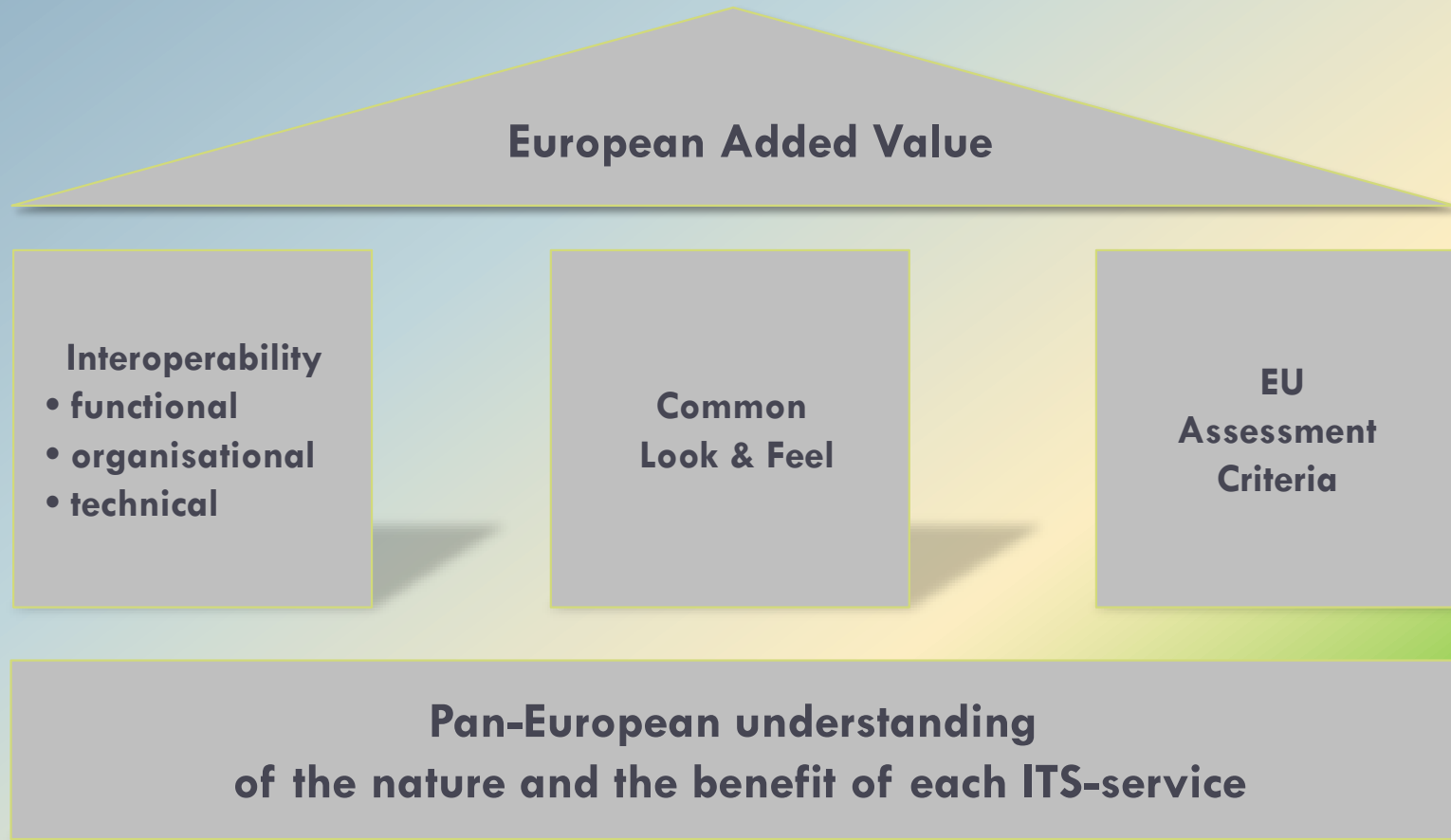


ITS Deployment Guidelines

What are the pillars?



7



ITS Deployment Guidelines

Requirement categories



8

- Functional requirements
 - Architectural aspects: decomposition into functions and interfaces
(with Reference to DATEX II-Profiles)
- Organisational requirements
 - Organisational aspects for the cooperation of partners of service deployment and operation
(have to agree on basic interoperability features, incl. DATEX II-Profiles)
- Technical requirements
 - ICT-Infrastructure requirements
 - Standards and Agreements: existing and required
 - **DATEX II (plus Profiles and potentially exchange specifications)**
 - Need for Additional Specifications (potentially including DATEX II extensions)
- Common Look & feel
- Level of Service Definitions

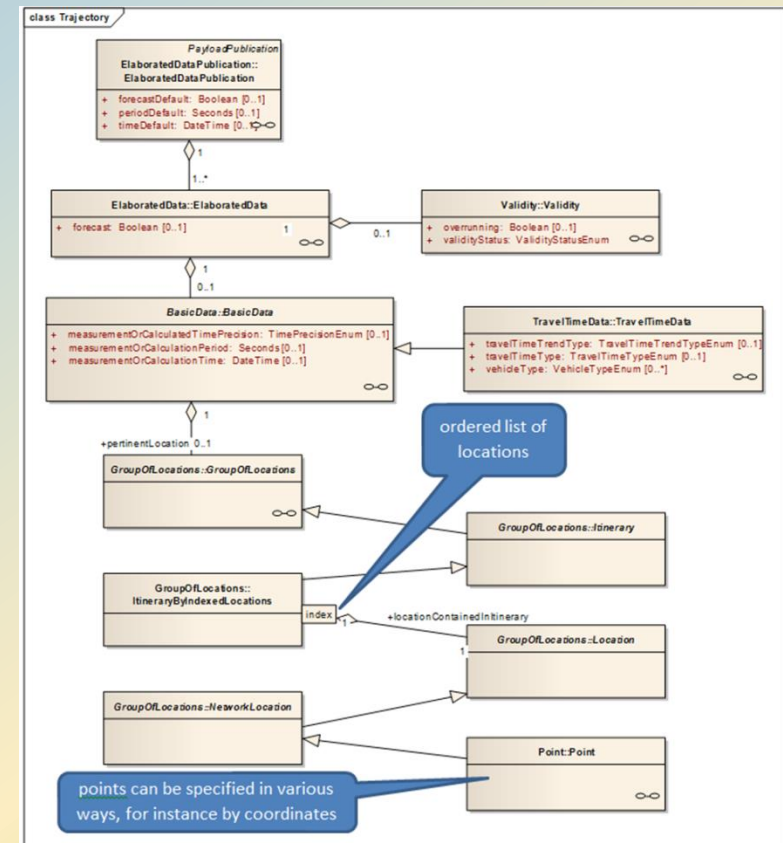
ITS Deployment Guidelines

DATEX II elements for **traveler information** services



9

- **static information:**
 - ▣ measurement site information
 - ▣ predefined locations (e.g. segments)
- **dynamic information:**
 - ▣ measured traffic data:
 - traffic flow
 - traffic speed
 - occupancy rate
 - ▣ elaborated data
 - level of service
 - travel times
 - ▣ operator actions
 - road works & closures
 - recommended routes



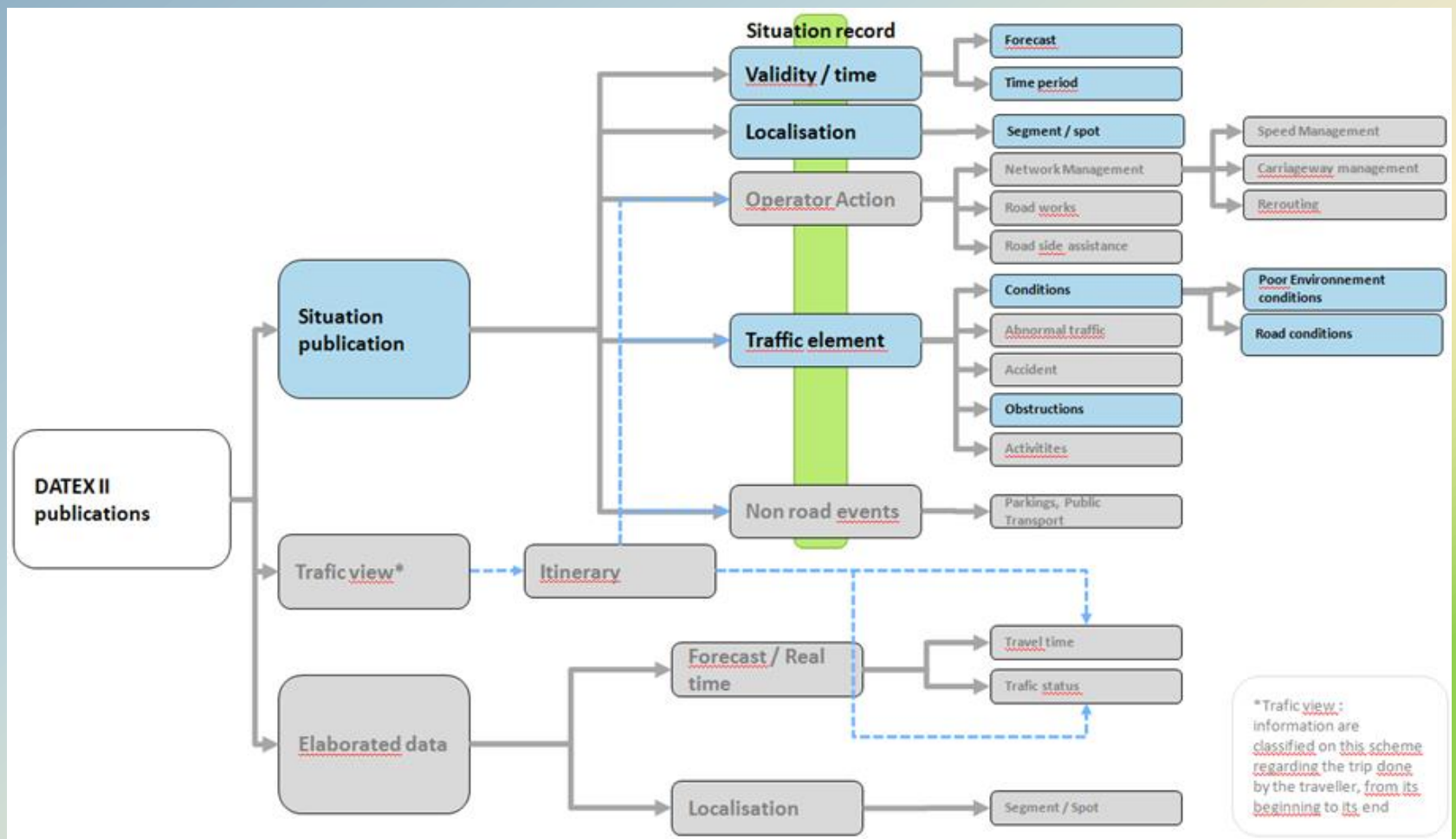
Example: Diagram of the trajectories profile

ITS Deployment Guidelines

DATEX II elements for weather information services

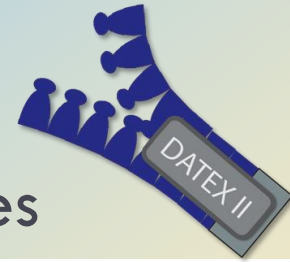


10



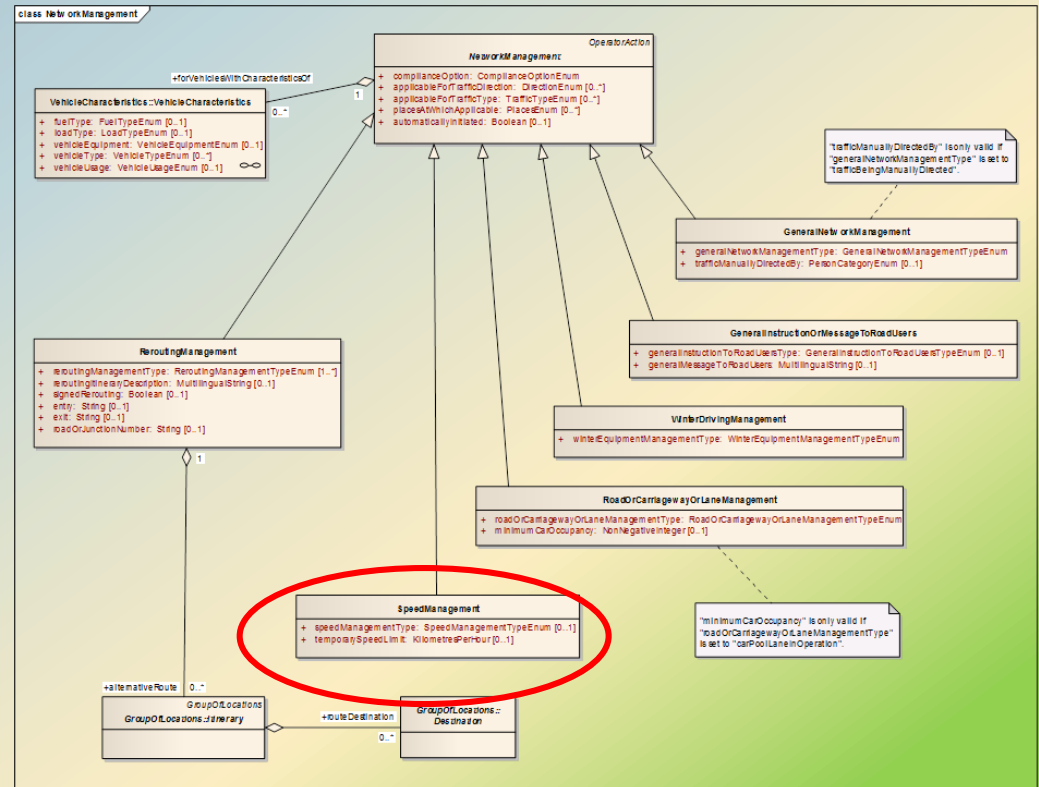
ITS Deployment Guidelines

DATEX II elements for traffic management services



11

- location and length
- network management type
 - dynamic lane management
 - ramp metering
 - ramp metering in operation
 - dynamic speed limits
 - vehicle type
 - speed limit
 - incident management
 - type of incident
 - actions to react
 - HGV overtaking ban
 - traffic management plans
 - no agreed profile yet
 - important interface to navigation services!



Example: Variable speed limits

ITS Deployment Guidelines

Conclusion



12

- ITS Deployment Guidelines are the basis of future deployments of ITS-services in Europe
- The usage of DATEX II is a “**must**” requirement
- Common DATEX II profiles **must** be developed and agreed and will come into operation within the next years
- **Questions:**
 - ▣ What is the link of harmonised DATEX II profiles in the guidelines to standardisation?
 - ▣ How should harmonised profiles be expressed in the guidelines and how detailed do they need to be?
 - ▣ How can the cooperation of DG Coordinators and DATEX experts best be organised to support the creation of harmonised DATEX II profiles?



THANK YOU FOR YOUR ATTENTION