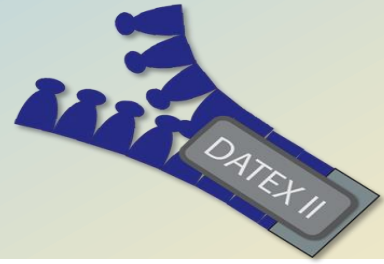


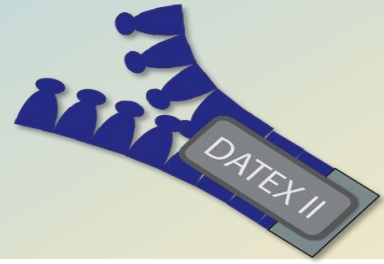
# ROADMAP DATEX II 2015-2020

# Outline



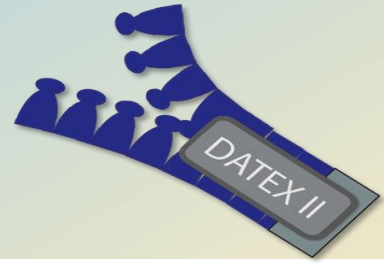
- ❑ Organisational developments
- ❑ The roadmap for maintenance
- ❑ The roadmap for support
- ❑ The roadmap

# The funding of DATEX II



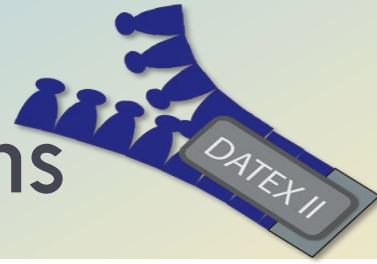
- Funded by EU
  - ▣ DATEX II Project
- 50% funding to MS via
  - ▣ Easyway
  - ▣ Grant
  - ▣ Easyway
  - ▣ EIP and EIP +

# The house of DATEX II



- Sustainable organisation and funding programme
- DG-Move recognises the EU interest
  - ▣ ITS directive
  - ▣ Catalyse the will to cooperate by
- Longterm funding under CEF seriously considered
- However: many stakeholders and € not in relation to administrative burdens

# Preconditions, considerations and discussions



- ❑ Open to other RA and other stakeholders as well
- ❑ Sufficient Political weight
- ❑ Low administrative burdens
- ❑ CEDR recognises the interest of the NRA's it represents but is NRA only
- ❑ TISA is not necessarily public interest

# Where are we coming from and working on



CEN TS 16157 Planning	2010				2011				2012				2013				2014				2015				2016					
	q1	q2	q3	q4	q1	q2	q3	q4	q1	q2	q3	q4	q1	q2	q3	q4	q1	q2	q3	q4	q1	q2	q3	q4	q1	q2	q3	q4		
Part 1: Context and Framework	Red	Red	Yellow	Yellow	Green	Green	Grey																							
Part 2: Location referencing	Red	Red	Yellow	Yellow	Green	Green	Grey																							
Part 3: Situation	Red	Red	Yellow	Yellow	Green	Green	Grey																							
Part 4: Variable Message Sign									Red	Red	Yellow	Yellow	Yellow	Green	Green	Grey														
Part 5: data									Red	Red	Yellow	Yellow	Yellow	Green	Green	Grey														
Part 6: Parking Information													Blue	Blue	Red	Red	Yellow	Green	Green	Grey	White	White								
Part 7: Traffic View																	Blue	Blue	Blue	Blue	Red	Red	Yellow	Yellow	Green	Green	Grey			

- = Preliminary stage, optional (12m)
- = Drafting stage (6m)
- = TCreview, processing comments by WG (6m)
- = Preparation of TCAdraft by CMC and Voting (6,5m)
- = Ratification and preparation of definitive texts by CMC (3m)



# And Exchange of course

## Will become a separate CEN/ISO TS

		2013				2014				2015				2016			
CEN/ISO exchange Planning		q1	q2	q3	q4	q1	q2	q3	q4	q1	q2	q3	q4	q1	q2	q3	q4
Part 1:	Context and Framework	■	■	■	■	■	■										
Part 2:	PIM	■	■	■	■	■	■										
Part 3.1:	PSM information delivery	■	■	■	■	■	■										
Part 3.2:	PSM cooperating ITS services	■	■	■	■	■	■	■	■								

■	= Preliminary stage, optional (12m)
■	= Drafting stage (6m)
■	= TC review, processing comments by WG (6m)
■	= Preparation of TCAdraft by CMC and Voting (6,5m)
■	= Ratification and preparation of definitive texts by CMC (3m)



# CEN review procedure

## Review of Technical Specifications

This page specifies the actions required to review or update a Technical Specification (CEN/TS).

Forms & Templates ▾

Useful Hyperlinks ▾

### 1 PROCESS

**1.1** A CEN/TS is not amended but replaced by a new edition with a new date of edition. Corrigenda are possible.

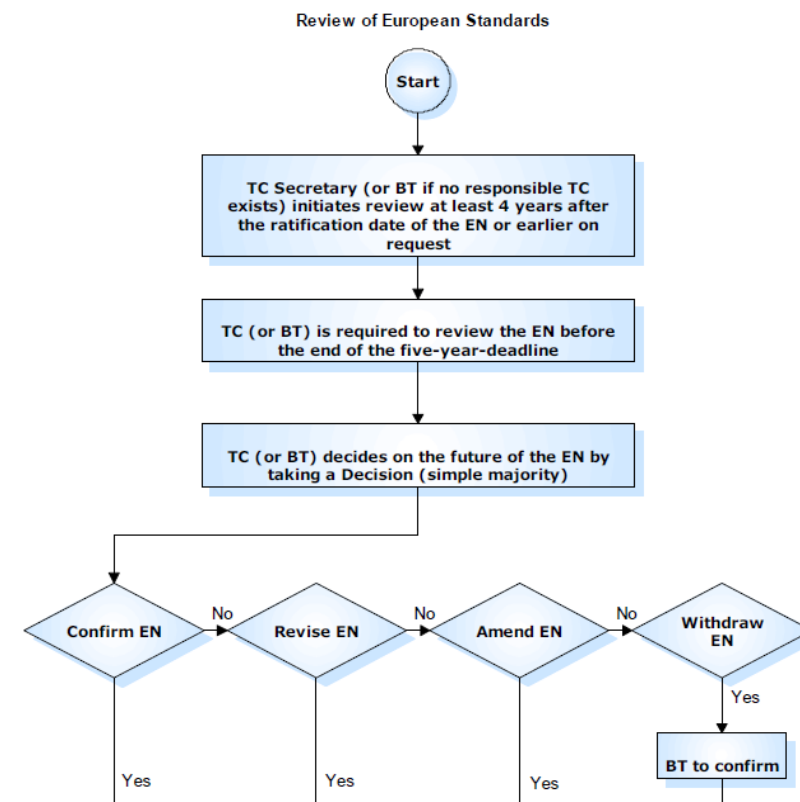
**1.2** The responsible CEN/TC shall ensure that the CEN/TS is reviewed at intervals of not more than three years, starting from its date of availability (dav).

**1.3** The aim of such review is to re-examine the situation which resulted in the publication of the CEN/TS. At each review, the responsible CEN/TC decides by taking a Decision on one of the following options, in accordance with the process for ['Delegated Decisions'](#):

- › an EN is now desirable, in which case the CEN/TS should be submitted for conversion to an EN through [UAP](#) or [Enquiry](#) and [Formal Vote](#).
- › the CEN/TS continues to represent the 'appropriate consensus' solution to the market need; in which case it should be [confirmed](#) for a further 3 years;
- › the CEN/TS is obsolete or no longer serves the market need; in which case the CEN/TS should be [withdrawn](#).

Any decision to confirm a CEN/TS for another three years shall be accompanied by a valid justification from the CEN/TC.

## Review of European Norm





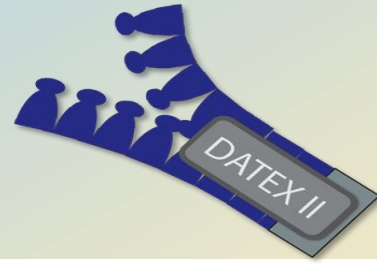
# 2014 and 2015 Review of part 1, 2, 3



	2011				2012				2013				2014				2015				2016			
	q1	q2	q3	q4	q1	q2	q3	q4	q1	q2	q3	q4	q1	q2	q3	q4	q1	q2	q3	q4	q1	q2	q3	q4
CEN TS 16157 Planning																								
Part 1: Context and Framework	■	■	■																					
version 3															■	■	■	■	■	■	■	■	■	■
Part 2: Location referencing	■	■	■																					
version 3															■	■	■	■	■	■	■	■	■	■
Part 3: Situation	■	■	■																					
version 3															■	■	■	■	■	■	■	■	■	■

- = Preliminary stage, optional (12m)
- = Drafting stage (6m)
- = TC review, processing comments by WG (6m)
- = Preparation of TCAdraft by CMC and Voting (6,5m)
- = Ratification and preparation of definitive texts by CMC (3m)
- = enquiry stage TC (3m)

# CEN Norm or CEN Technical Standard



CEN TS 16157	2010				2011				2012				2013				2014				2015				2016				2017				2018				2019				2020							
	q1	q2	q3	q4	q1	q2	q3	q4	q1	q2	q3	q4	q1	q2	q3	q4	q1	q2	q3	q4	q1	q2	q3	q4	q1	q2	q3	q4	q1	q2	q3	q4	q1	q2	q3	q4	q1	q2	q3	q4	q1	q2	q3	q4				
Planning draft																																																
Part 1, 2 and 3	Red	Red	Yellow	Yellow	Green	Green	Grey																																									
version 3 TS																																																
version 3 EN																																																
Part 4: VMS									Red	Red	Yellow	Yellow	Yellow	Green	Green	Grey																																
Part 5: measured									Red	Red	Yellow	Yellow	Yellow	Green	Green	Grey																																
Part 6: Parking													Blue	Blue	Blue	Red	Yellow	Green	Green	Grey																												
Part 7:																	Blue	Blue	Blue	Blue	Red	Red	Yellow	Yellow	Green	Green	Grey																					

# DATEX II preliminary support roadmap



DATEX II version roadmap	2013				2014				2015				2016				2017				2018				2019				2020			
	q1	q2	q3	q4	q1	q2	q3	q4	q1	q2	q3	q4	q1	q2	q3	q4	q1	q2	q3	q4	q1	q2	q3	q4	q1	q2	q3	q4	q1	q2	q3	q4
<b>Part 1: Methodology</b>																																
<b>version 3 TS</b>																																
<b>version 4 TS</b>																																
<b>version 4 EN</b>																																
<b>Part 2 Location referencing</b>																																
<b>version 3 TS</b>																																
<b>version 4 TS</b>																																
<b>version 4 EN</b>																																
<b>Part 3: Situation</b>																																
<b>version 3 TS</b>																																
<b>version 4 TS</b>																																
<b>version 4 EN</b>																																
<b>Part 4: VMS</b>																																
<b>version 3 TS/EN</b>																																
<b>Part 5: Measure/elaborated</b>																																
<b>version 3 TS/EN</b>																																
<b>Part 6: Parking</b>																																
<b>version 3 TS/EN</b>																																
<b>Part 7: Traffic View</b>																																

